



prospectus

exhibiting, promoting and preserving the fine arts since 1922

President

Judy Metcalfe

Co Vice Presidents

Bonnie Gray & Marion Hall

Treasurer

Larry Swift

Recording Secretary

Andrea van Gestel

Corresponding Secretary

Dolores E. Reid

Trustees

James Daly
Donald Doyle
Karl Frank
Jeannie McIntyre
Timothy Neill
Leigh Slingluff
John Strohmeier
Peter Tysver
Marny Williams

Gallery Director

Linda Cote

2019 Gallery Hours

May 3 through October 19
Mon through Sat 10am - 5pm
Sun noon - 5pm
Closed July 4

Calling All Members

Annual Meeting
Sunday, August 18 at 3pm



www.facebook.com/nsartsa

2019 prospectus at a glance . . .

Exhibition I May 3 - June 1 • Artist Members Juried New Artist Members Non-juried
Associate Members Show I May 3 - June 1 • Associate Members Non-juried
Exhibition II June 7 - July 6 • Artist Members Juried
Paige Wallis Solo Show June 5 - 20 Gordon Grant Room
Richard Giedd Solo Show June 5 - 20 Hallway Gallery
Fari Forouhar Solo Show June 23 - July 6 Gordon Grant Room
Helene Pierce Solo Show June 23 - July 6 Hallway Gallery
Auction Preview July 12 - August 2
Exhibition III Show of Small Works July 12 - August 3 • Artist Members Juried
Permanent Collection Show and Sale July 12 - August 3 Hallway Gallery
Auction and Gala August 2
Exhibition IV August 9 to September 7 • Artist Members Juried
Associate Members Show II August 9 - September 7 • Associate Members Non-juried
Ron Straka Solo Show September 11 - 24 Gordon Grant Room
Silvana Siudut Solo Show September 11 - 24 Hallway Gallery
Exhibition V September 13 - October 7 • Artist Members Juried
Jude Abbe Solo Show September 27 - October 10 Gordon Grant Room
Dan DeLouise Solo Show September 27 - October 10 Hallway Gallery
Cape Ann Plein Air October 6 - 14
Cape Ann Plein Air Gala and Painting Sale October 12

2019 Jury . . .

Exhibition Jury

Jude Abbe	Dennis Poirier
John Caggiano	Larry Pumfrey
Anne Demeter	Judy Pumfrey
Jim Gibbons	Dolores E. Reid
Ginger Greenblatt	Charlotte Roberts
Anita Johnson	Lennie Strohmeier
T.M. Nicholas	Jeff Weaver

New Member Jury

Katherine Coakley
Jim Daly
Shelly Eager
Marion Hall
Jonathan Hotz
Christine Whalen-Waller
Heidi Caswell Zander

Alternates:
Nancy Colella
Annalee Johnson
Nella Lush
Carmela Martin

Exhibition 1

May 3 - June 1 ~ Artist Member Juried
 New Artist Members Non-juried
 Reception Sunday May 5 (2 - 4pm)
 Receiving: April 25 - 29 Pickup June 2 & 3

Awards

Marguerite Phillips Neuhauser Shafer Memorial Award	\$500
<i>Representational Oil Painting of/or from East Gloucester, Rocky Neck, the Working Waterfront or The Fort</i>	
Bank Gloucester Award	\$500
Paul Strisik Memorial Award	\$350
<i>Excellence in Traditional Landscape or Sea Related Subject</i>	
Lazare Barth Memorial Award	\$100
<i>For A New Artist Member</i>	
Terry Ludwig Pastels	\$160 (value)
<i>Gift Certificate for Excellence in Pastel</i>	
Blick Art Materials Award	\$100 (value)
<i>Gift Certificate</i>	
Robert Stefani Memorial Award	\$100
<i>Excellence in Any Medium</i>	
Guerrilla Painter Award for New Artist Member	\$80 (value)
<i>Gift Certificate</i>	
Art Supplies Wholesale	\$50 (value)
<i>Gift Certificate</i>	
Mimi Dee Artwear - Artist Award	\$75 (value)
<i>Gift Certificate</i>	
Popular Award	\$50

Associate Members Exhibition 1

May 3 - June 1 ~ Associate Members - Non-juried
 (submit 1 no wider than 30" including frame)
 Reception Sunday May 5 (2 - 4pm)
 Receiving: April 25 - 29 Pickup June 2 & 3

Awards

Charles Umanita Memorial Award	\$100
<i>Excellence in Impressionist New England Landscape</i>	
Dixie Clark Memorial Award	\$100
<i>Excellence in Landscape or Seascape</i>	
<i>Painting in any Medium</i>	
Cheap Joe's Art Stuff	\$100 (value)
<i>Gift Certificate</i>	
Jack Richeson & Co., Inc.	\$100 (value)
<i>Gift Certificate</i>	
Dominic J. Olivo Memorial Award	\$50
<i>Excellence in Any Medium</i>	
Mark E. Dodd Memorial Award	\$50
<i>For Innovative Approach</i>	
Mimi Dee Artwear - Associates Award	\$75 (value)
<i>Gift Certificate</i>	
Popular Award	\$50

Exhibition 2

June 7 - July 6 ~ Artist Members - Juried
 Reception Sunday, June 9 (2 - 4pm)
 Receiving June 2 & 3 - Pick-up July 7 & 8

Awards

Vermont Community Foundation	
Alden Bryan Memorial Award and Medal	\$1,000
<i>Traditional Landscape in Oil</i>	
Harold Rotenberg Memorial Award	\$200
<i>For Innovation in Painting</i>	
New England Watercolor Society Award	\$150
<i>Excellence in Watercolor</i>	
Robert B. Donnelly, Jr., MD Memorial Award	\$100
<i>Excellence in Watercolor</i>	
Georgianna Waterhouse Memorial Award	\$100
<i>Excellence in Painting</i>	
Howard Curtis Memorial Award	\$100
<i>Excellence in Marine Painting</i>	
Cheap Joe's Art Stuff	\$150 (value)
<i>Gift Certificate</i>	
Art Supplies Wholesale	\$50 (value)
<i>Gift Certificate</i>	
Popular Award	\$50

Exhibition 3 Small Works

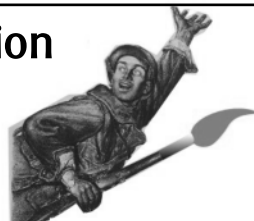
July 12 - August 3 ~ Artist Members - Juried
 (max 20 x 24 including frame)
 Reception Sunday, July 14 (2 - 4pm)
 Receiving July 7 & 8 - Pick-up August 4 & 5

Awards

Grumbacher Award for Distinction	\$600
Institution for Savings	\$250
<i>Excellence in Any Medium</i>	
Cape Ann Savings Bank Award	\$250
<i>Excellence in Painting</i>	
Cape Ann Savings Bank Award	\$250
<i>Excellence in Painting</i>	
Guerrilla Painter Award	\$130 (value)
<i>Gift Certificate</i>	
H.K. Holbein, Inc	\$122 (value)
<i>Artist Materials Award - Watercolors</i>	
Art Supplies Wholesale	\$50 (value)
<i>Gift Certificate</i>	
Popular Award	\$50

Annual Fine Art Auction

August 2
Artist Members - Juried
Receiving July 7 & 8



This is the major fundraising event for NSAA!

Last season our auction was a great success. Thank you to all who contributed to this success with your art, volunteer efforts and your donations.

Auction specifications will be announced online May 15.

Exhibition 4

August 9 - September 7 ~ Artist Members - Juried
Reception Sunday, August 18 (1 - 3pm Annual Meeting to follow)
Receiving August 4 & 5 - Pick-up September 8 & 9

Awards

Rosamond Smith Bouve Memorial Award	\$500
<i>In memory of Rosamond Wilder Smith Bouve Traditional Portrait/Cityscape/Urban Scene</i>	
Carleen Muniz Memorial Award	\$250
Institution For Savings Award	\$250
<i>Excellence In Any Medium</i>	
Charles Movalli Memorial Gold Medal	\$200
<i>Excellence in Painting</i>	
Jack Richeson & Co., Inc.	\$150 (value)
<i>Gift Certificate</i>	
Jon E. Erickson Memorial Award	\$100
<i>Excellence in Graphics</i>	
H.K. Holbein, Inc.	\$136 (value)
<i>Artist Materials Award - Oils</i>	
Michael Stoffa Memorial Award	\$50
<i>Excellence in Traditional Painting</i>	
Art Supplies Wholesale \$50 (value)	
<i>Gift Certificate</i>	
	\$50 (value)
Popular Award	\$50

Associate Members Exhibition 2

August 9 - September 7 ~ Associate Members - Non-juried
(submit 1 no wider than 30" including frame)
Reception Sunday, August 18 (1 - 3pm Annual Meeting to follow)
Receiving August 4 & 5 - Pick-up September 8 & 9

Awards

Constance Mullen Memorial Award	\$250
<i>Excellence in Painting</i>	
Carleen Muniz Memorial Award	\$100
Louise Demeter Memorial Award	\$75
H.K. Holbein, Inc.	\$75 (value)
<i>Artist Materials Award - Fluid Acrylics</i>	
Art Supplies Wholesale	\$50 (value)
<i>Gift Certificate</i>	
Guerrilla Painter Award	\$50 (value)
<i>Gift Certificate</i>	
Mimi Dee Artwear - Associates Award	\$75 (value)
<i>Gift Certificate</i>	
Popular Award	\$50
"Art Spirit" Award	TBA
<i>Excellence in Any Medium</i>	

Exhibition 5

September 13 - October 7 ~ Artist Members - Juried
Reception Sunday, September 15 (2 - 4pm)
Receiving September 8 & 9 - Pick-up October 8 & 9

Awards

Vermont Community Foundation	\$1000
Mary Bryan Memorial Award and Medal	
<i>Excellence in Watercolor</i>	
Harold and Arlene Schnitzer Care Foundation Award	\$500
<i>For Excitement and Inspiration in Acrylic or Mixed Media</i>	
First Ipswich Bank Award	\$250
Tom and Gloria Nicholas Award	\$200
<i>In Memory of Charles Movalli Excellence in Oil</i>	
Guild of Boston Artists Award	\$150
<i>In Memory of Curtis Hanson Excellence in Traditional Painting</i>	

Exhibition 5 continued

Jack Richeson & Co., Inc.	\$125 (value)
<i>Gift Certificate</i>	
Charles C. Gruppe Award	\$100
<i>Excellence in Marine Painting</i>	
The Artist's Family and Friends Award	\$100
<i>In Honor of Loved Ones Who Support the Artist</i>	
Gamblin Artists Colors Co.	\$95 (value)
<i>Merchandise Award</i>	
Art Supplies Wholesale	\$50 (value)
<i>Gift Certificate</i>	
Popular Award	\$50
Art Spirit Award	TBA
<i>Excellence in Any Medium</i>	

Call for New Artist Members . . .

September 16 Deadline for Application and Artwork
Sept. 17 Jury Convenes • Sept. 18-21 Pick-up of works
September 21 Critiques (optional) for applicants not selected

Application and instructions for Artist Member consideration is now available on our website by visiting: www.nsarts.org/membership.html. Please contact the gallery if you prefer to have the information mailed to you: 978.283.1857 or arts@nsarts.org.

Please note . . .

Potential new members are chosen solely on the basis of their artistic ability; the selection process is completely anonymous. The jury is given no information in regard to the identity or credentials of the artist applying for membership when they view artwork submissions during the jury process.



It's a great honor for NSAA artists to receive an award at one of our exhibitions. Made possible by contributions from individuals and organizations throughout the state of Massachusetts and beyond, these

awards have been created to recognize the achievements of our renowned artists. Many are memorial awards honoring a family member or friend who shared a special love of the arts. Some are given for excellence in a specific medium or discipline, others are open to all media.

NSAA's elected artist member jury selects the most deserving artwork and our donors have the option to attend the awards ceremony and reception to present the award themselves or to have our NSAA President of the Board of Trustees present the award.

Would you like to fund an award? Questions?

Please contact the gallery 978.283.1857 or lcote@nsarts.org

• **Exhibition Policy**

Work must be recent and never previously exhibited at NSAA. Original work only. Hand pulled works from etching plates are acceptable. No wet paint, digital images, prints, giclee prints, class work, copies or likenesses of another's painting, drawing or photograph are acceptable. Two works may be submitted for juried exhibitions. One work may be submitted for non-juried exhibitions. However, the Jury has discretion and only one work may be accepted due to our large Membership and number of submissions. All work is hung at the discretion of the Arts and Exhibitions Committee. To protect the integrity of our exhibitions and out of respect for the other Artist Members, no artwork shall be repositioned once it is hung or removed completely from any exhibition. Artwork accepted for exhibiting cannot exceed 56" in width including the frame. Photographs, painted over photographs or giclées will not be accepted. *Dues must be current to exhibit.*

• **Awards**

An award may be forfeited if the recipient or recipient's representative is not present to receive the award at the awards ceremony.

• **Framing Policy**

All artwork must be appropriately framed. The Gallery Director and/or A&E Chair have final discretion. Artwork must be dry, frames in good condition, wired in the upper third of the frame and completely ready for hanging. No saw-tooth hangers, no frameless glass on works on paper. Only Museum quality Acrylic/Plexiglas frames are acceptable. Gallery-wrapped canvas is allowed but must be painted on all sides and stapled on the back of sturdy stretchers and wired for hanging. All framed works on paper, pastel, watercolor, pen and ink, etc., must be protected by glass or Plexiglas. White or off-white mats are recommended.

• **Exhibition Sculptures**

Two sculptures may be submitted for the Jury's consideration. Size may not exceed 6' in greatest dimension. All sculptures must have a stable and secure base. Sculptors may supply their own pedestals if desired.

• **Pricing**

Prices may not be changed once they have been listed in the Exhibition Listing. "Not for Sale" or "Price on Request" is not eligible for exhibition consideration.

• **Commissions**

A commission of 33% will be retained by NSAA for all works sold (40% for solo/small group shows). A 15% commission is requested on referrals on any sale made as a direct result of NSAA staff efforts. Sales IRS/state reporting is the sole responsibility of the member.

• **Right to Reproduce Artwork**

NSAA assumes the right to photograph any work accepted into an Exhibition for catalogs, website listing or other publicity purposes. Submission of artwork to NSAA shall be understood as an agreement of the artist to these conditions.

• **Exhibition Labeling**

Please fill out the 3-part labels and attach on back left-hand upper corner of artwork at the time of delivery. Please do not separate the sections of the labels. Labels will be available at the NSAA gallery and online www.nsarts.org/exhibitions.html.

• **Shipped Paintings Accepted**

Artwork may be shipped prepaid to NSAA. Arrangements for pick-up and/or return shipping and insurance is the sole responsibility of the artist.

• **Storage**

Members who live out of state may store their work for the season's exhibitions. Please contact the Gallery Director for details. Fees may apply. Works left in storage without making prior arrangements may incur a fee of \$1 per day per piece.

• **Liability**

Every reasonable care will be exercised in the handling and storage of artworks. However, NSAA will not be responsible for loss or damage to works. Submission implies agreement with these conditions.

• **Miniature Showcase, Studio Showroom and Front Gallery Showroom "Pop Up" NEW!**

Miniature Showcase: two original works per artist member, any medium, not exceeding 8" x 10" including frame. Studio Showroom: two original works per artist member, not exceeding 16" x 20" including frame. Front Gallery Showroom: two original works per artist member, not exceeding 56" in width including frame. Acceptance of works is as space allows, and is at the discretion of the Gallery Director. Please use white exhibition labels for your submissions.

• **Shrink-Wrap**

Up to four shrink-wrapped pieces will be accepted. Mediums include original watercolors, acrylics, graphics or oil on panels, size should not exceed 30" x 38" including mat. Mats must be clean. Shrink-wrapped work must be secure and carefully finished.

• **Cards**

This category can be postcards, notecards and creative items upon approval. A limit of 12 cards for local artists, and 24 cards for our long-distance members will be accepted. Each item should be retail priced by the artist. *The Artist will receive 50% of retail price within 30 days of receipt of invoice.*

• **Biographies**

All NSAA Artist Members who do not have a website should provide an updated biography, with a photo if possible. Your biographies serve as a valuable resource for both the sales staff and NSAA visitors interested in the purchase of artwork.